



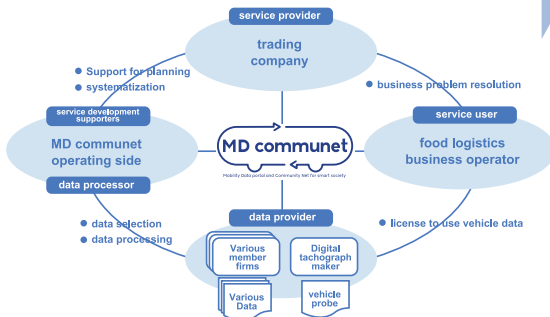
# Traffic environment information-portal " MD communit® "

## Provide technical services to support service development

Case Study 1

### New Service Planning Using Digital tachograph/Dashborad camera Probe Data

- Create a necessary scheme for service creation by combining digital tachograph makers that generate vehicle probe data, trading companies that plan service creation, and service users who are data owners and have business issues.
- MD communit management participates in service development support and data processing as a service provider and a data processor, while keeping in mind the to give a shaope of supporting menus for data providers
- Planning multiple use cases to solve specific business issues faced by service users



### Create a shipping profile

Use case for improving the parking method of delivery address from probe information, and dealing with problems such as re-parking, driving around, and parking violation.

#### Preparation (obtaining probe data → processing → setting of dashboard camera)



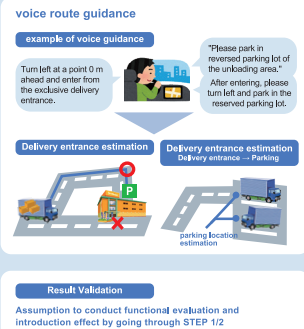
#### Demonstration STEP 1



#### Demonstration STEP 2



#### real field demonstration



### Data linkage service



### Collaboration with private enterprises



NTT DATA

ZENRIN



and more

### Various data-utilizing use cases

- ✓ Navigation service for logistics companies
- ✓ Personal navigation service
- ✓ Solving problems in tourist cities
- ✓ Self-driving bus at roadside stations
- ✓ Municipalities · emergency vehicle dispatch support
- ✓ Construction vehicle operation management
- ✓ User action support by displaying additional information on route guidance
- ✓ Commercial vehicle route selection/Safe driving support